

**2010-2011
Leadership
Team**



Boulder City Sunrise Rotary

"Service Above Self" - Building Communities Bridging Continents

The Rotary Wheel February 17, 2011

Officers

**President
Kevin Nicholson**

**President Elect
John Milburn**

**President
Elect/Elect
Lee Hagen**

**Treasurer
Eric Estes**

**Secretary
Goldie Begley**

**Sergeant
Judi Bible**

**Board
of Directors**

**Kevin Nicholson
Rich Baughman
Alan Bowman
Donna Draney
Lee Hagen
Roger Hall
John Milburn
Doug Scheppmann**

**Past President
Paul Krumm**

**Foundation
DB Merrell**

**Photos
Roger Hall**

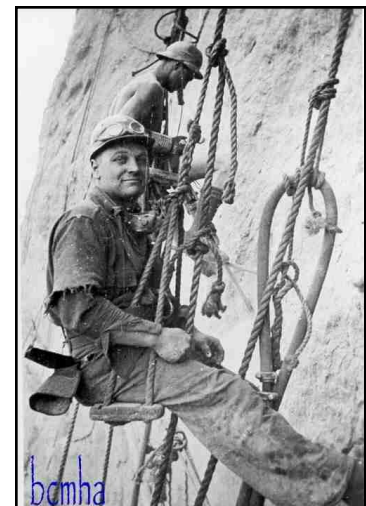
**Bulletin
Goldie Begley**



Boulder City Museum and Historical Association



Preserve our past for future generations. Ask how you can help support our museum.



Congratulations to Jeff and Dawn. Through all their hard work, they were able to complete the Red Badge Checklist and were able to receive their permanent Blue Badge.

Great Job!



Don't forget about the upcoming International Convention and District Conference.

District 5300, 2011 Conference

June 9-11, 2011

La Jolla Marriott



It was so good, I thought I would share the lickerish that Bert gave me with everyone this week. I hope you enjoyed it as much as I did!

WOW!



Great Job!

We can all be proud of the fact that through all of our hard work our club has surpassed the 3 year goal of raising \$50 per year / per member by donating over \$9,500 towards the "Rotary's \$200 Million Challenge".

Top 10 Clubs in Membership Growth

July 1, 2010 - December 31, 2010

- Walnut Valley
- Rancho Del Chino
- Las Vegas Central
- Monrovia
- Claremont Sunrise
- Pico Rivera
- Covina
- Apple Valley
- Boulder City Sunrise
- Las Vegas Southwest

